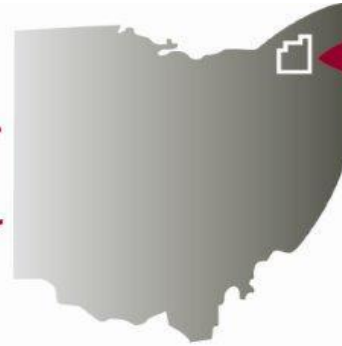


Geauga
County



EDUCATIONAL SERVICE CENTER

LCESC



LAKE COUNTY EDUCATIONAL SERVICE CENTER



Geauga and Lake County ESC's Future Vision

Mission and Vision Statement:

The Geauga and Lake County Educational Service Centers are an integral part of the education system in our counties and state. Our VISION is to be recognized as premier Educational Service Centers that provide unparalleled services to support student achievement throughout our region. We will accomplish this by providing innovative programs and quality services that add value to our educational community. We focus on the development of programs and hire key personnel to provide services that positively impact and improve instruction, assessment, special education, and student achievement.

GEAUGA AND LAKE COUNTY

ESC'S GOALS

2019-2020

GOAL #1

Expansion of Services

Investigate opportunities to identify and expand services to meet the diverse needs of school districts and students

- Collaborate with neighboring ESC governing boards in order to strengthen the future of Northeast Ohio districts and to continue to meet their needs.
- Expand student programs to meet growing special education needs across grade levels.
- Continue expansion in vocational programming in Geauga, Lake, and Cuyahoga county schools and increase community employer partnerships.
- Increase involvement in initiatives with the Ohio Department of Education.
- Develop and market curriculum and assessment supports and resources.

GOAL #2

Communication/Public Relations

Enhance communication and strengthen marketing with educators, employees, community/parents.

- Ongoing communication of internal roles and responsibilities of staff to school districts.
- Consistently market current service offerings.
- Research innovative and effective communication tools/mechanisms to provide consistent and timely updates to schools and community.
- Alignment with community agencies and partners in order to create an effective service delivery framework.

GOAL #3

Professional Development and Staffing Analysis

Strengthen internal professional development structures to enhance targeted training for high quality programs.

- Leverage high quality staff for purposes of recruitment and retention in order to develop content specific specialists by providing targeted training and staff support.
- Survey districts to meet staff professional development needs.
- Identify and offer resources to meet district needs specific to students (e.g. technology, curriculum materials, blended learning, grant writing, transportation).
- Offer targeted professional development based on identified staff needs.
- Staff will participate in assigned district professional development, as applicable.

GOAL #4

Finances

Provide cost effective services/programs to meet educational needs of students.

- Continue to improve general fund revenue and build confidence/transparency of billing process with district input.
- Utilize the management board for input regarding staffing and program implementation.
- Continue to meet with districts on an ongoing basis and communicate billing program costs and rationale.
- Identify new sources of revenue through expansion of programs and services.
- Transition to new financial software to increase efficiency in the Treasury Department.

Geauga & Lake County Programs

- ❖ Adaptive Physical Education
- ❖ Behavioral Specialist
- ❖ Broodmoor
- ❖ Carrington School (Court Placed Alternative Program)
- ❖ Community and School Prevention Services
- ❖ Crisis Prevention Intervention (CPI) Training
- ❖ Gaitway High School (Alternative ED Program)
- ❖ Geauga Achieve Multiple Disabilities Program
- ❖ Geauga ED Programs – BRC and CORE
- ❖ Geauga and Lake Preschool
- ❖ Geauga Youth Center School
- ❖ Gifted Services
- ❖ K'nextions Learning Academy
- ❖ Lake Academy
- ❖ Latchkey
- ❖ Nutrition
- ❖ Nursing Services
- ❖ Occupational Therapy Services
- ❖ Physical Therapy Services
- ❖ Parent Mentor
- ❖ Social Work Services
- ❖ Speech Language Pathologists
- ❖ S.T.A.R.S. Autism Program
- ❖ S.A.I.L. Autism Program
- ❖ Transportation
- ❖ Visually Impaired Programs
- ❖ Vocational
- ❖ iStem

Superintendents Office

Jennifer Felker, Superintendent

Tina DeMattia, Executive Assistant to Supt.

Deb Burke, Director of Human Resources

Becky Tressler, Human Resources Generalist

Support Staff

Tammy Kuhn, Receptionist

Brittany Garrett, Administrative Assistant

Carol Edwards, Administrative Assistant

Cindy Sague, Administrative Assistant

Amy Palker, Administrative Assistant

Treasurers Office

Greg Slemons, Treasurer

Sue Sotkovsky, Assistant Treasurer

Crystal Morrison, Payroll/Benefits

Katie Hoffmeister, Accounts Payable

Jessica Dowd, Billing Specialist

Carrington Youth Academy

Michael Abraham, Director
Alternative Placement Education at
Carrington Youth Academy

- Located in the Carrington Youth Academy building at 2114 Noble Road, East Cleveland
- The school is housed in the building where the students live
- 26 different counties served
- 78 different school districts served



Gaitway High School

Anthony Forfia, Principal



Located at Fieldstone Farm Therapeutic Riding Center in Chagrin Falls.

Currently serving students from: Cardinal, Kenston, Newbury, Shaker Heights, Beachwood, South Euclid-Lyndhurst, Painesville, Cleveland Heights-University Heights, Hudson, Mayfield

- Students are referred to Gaitway based on the decision from the IEP team.
- Students that are successful at Gaitway have a history of school refusal, anxiety, mood disorders and other mental health concerns.
- The majority of the Gaitway students spend ½ day working on academic requirements & the other ½ day in a vocational setting.
- Runs on a block schedule. Class periods are 75 minutes long. Students focus on two core academic classes at a time plus an elective each semester.

Programming for Students with Emotional Disturbance

Robin Ludwig, Director

Building Resiliency in Children BRC

- Partnership with Ravenwood Health and Signature Health
- Provides educational services as well as therapeutic day treatment to students

Jordak Elementary (Cardinal Schools)

Kindergarten
1st – 3rd Grade

Hale Road Building (Riverside District)

Middle School
High School

CORE

- High School Classroom located at Auburn Career Center
- Typically students in 11th & 12th grades
- Students are also enrolled in an Auburn program for ½ day
- Services beyond academic instruction and case management are stipulated in the IEP

Auburn Career Center

11th & 12th grades



GEAUGA ACHIEVE

Robin Ludwig, Director

Classroom Locations

West Geauga

Lindsey Elementary School
Kindergarten – 5th grade

West Geauga Middle School
6th grade – 8th grade

West Geauga High School
9th grade -12th grade (age 21)

Cardinal

Cardinal High School
9th grade – 12th grade (age 21)

Population Served

- Students in Kindergarten through High School (age 21)
- Intensive needs with multiple disabilities
- Currently serving all Geauga districts, open to serving any district



Special Visitors at Lindsey Elementary



International Festival at Timmons



Phases of the moon at WGMS

Behavior Specialist

Robin Ludwig, Director

- 1 Board Certified Behavior Analyst (BCBA)
- Districts Served: Berkshire, Cardinal, Madison, Newbury, West Geauga
- Programs Served: ED Programming, Geauga ACHIEVE, Preschool, STARS
- Targets: Increase of appropriate school wide behaviors through use of positive behavioral supports and interventions

Crisis Prevention Intervention (CPI)

Robin Ludwig, Director

- 3 Certified Trainers
- Verbal de-escalation and crisis prevention skills in addition to personal safety techniques for the care, welfare, safety and security of all
- Initial trainings and refresher trainings are offered throughout the school year
- On site support as needed for individuals who have been trained
- On site district trainings as requested

Occupational Therapists

Janet Sapp, Coordinator

- 8 OTs
- 4 COTAs
- Districts Served: Berkshire, Cardinal, Newbury, Madison and Broadmoor
- Programs Served: Geauga ACHIEVE, iSTEM, Gaitway, STARS, Preschool, St. Anslem, Passport at Metzenbaum, SAIL
- Targets: Fine Motor, Visual Motor, Sensory, Daily Living

Physical Therapists

Janet Sapp, Coordinator

- 5 PTs
- 1 PTA
- Districts Served: Berkshire, Cardinal, Kenston, Newbury, Riverside, West Geauga, Broadmoor, Willoughby-Eastlake, Fairport Harbor, Painesville City
- Programs Served: Geauga ACHIEVE, Preschool, Passport at Metzenbaum, BRC and SAIL
- Targets: Physical mobility to ensure student access to the educational environment

Adapted Physical Education

Janet Sapp, Coordinator

GOAL:

To provide student specific modifications and supports for students to develop physically literate individuals who have the knowledge, skills and confidence to enjoy a lifetime of healthful physical activity.

SERVICES:

Provides adapted physical education (APE) services to GCESC Programs: Geauga ACHIEVE, STARS, Gaitway Districts receiving services: Chardon, West Geauga

Services for Students with Visual Impairment(s)

Janet Sapp, Coordinator

Teacher of Visual Impairment

&

Orientation & Mobility Specialist



Mary Kline and Constance Moore

- Districts served: Berkshire, Cardinal, Chardon, Fairport Harbor, Kirtland, Madison, Newbury, Painesville,
- Lake County ESC collaboration

Speech Language Pathologists

Janet Sapp, Coordinator

- 10 SLPs
- Districts Served: Chagrin Falls, Perry
- Programs Served: Geauga ACHIEVE, iSTEM, Gaitway, STARS, Preschool, Broadmoor School, SAIL, TLA, BRC
- Targets: Articulation, Receptive/Expressive Language, Social Skills, Fluency and Assistive Devices

Assistive Technology Evaluation

Specific to Communication Devices

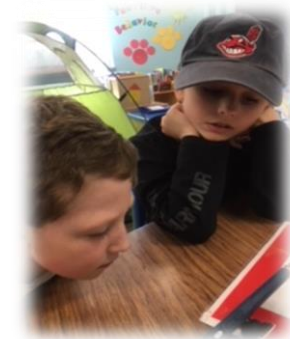
Cara Colak, Speech Language Pathologist

Janet Sapp, Coordinator



SERVICES:

- **Consult** with Speech Language Pathologist to identify and teach pre-communication strategies for possible future assistive technology users
- **Evaluation for Assistive Technology Communication Device**
- **Evaluation for Eye Gaze** Communication



K'nextions Learning Academy (KLA)



The K'nextions Learning Academy (KLA) offers districts an alternative choice in providing a rigorous, virtual curriculum to students. KLA is designed to be cooperative, not competitive, with school districts.

KLA Offers:

- An alternative online curriculum program for school districts
- District ability to maintain state funding and student enrollment
- Weekly tutoring on-site
- High-quality, rigorous digital courses aligned to local, state, and national standards
- Highly-qualified Lake County ESC teachers
- Engaging graphics and personalized learning, both of which promote motivation, engagement, and achievement with Chromebook provided

KLA SERVES STUDENTS WHO ARE: • At-risk youth • Accelerated • Credit Deficient • Incarcerated • Special Needs • Home-Schooled • Suspended • Enrichment • Credit Recovery

Latchkey

Crystal Cicconetti, Coordinator

Located at McKinley Elementary in the Fairport Harbor Exempted Village School District

Supports families with before and after school care.

18-19 school year enrollment: 105 students

18-19 Summer enrollment: 23 students

Broadmoor Lake County Board of Development Disabilities

We support the Lake County Board of Development Disabilities and districts by providing 1:1 Para Professionals, Speech Language Pathology , Occupational Therapy and Physical Therapy services.

Currently providing 12 paraprofessionals for 15 students under the direction of Ken Bernacki.

2 Speech Language Pathologists, 1 Physical Therapist, 1 Occupational Therapist, and 1 Certified Occupational Therapists Assistants under the direction of Janet Sapp.

Nutrition SERVICES

Kelly Minnick – Director
Michelle Paptic – Supervisor



Auburn Career Center
Berkshire Local Schools
Kenston Local Schools
Madison Local Schools
Painesville City Schools
West Geauga Local Schools

CUSTOMIZED PROGRAMS for School Districts

Specializing in:

-  *Complete Program Management*
-  *Financial and Program Analysis*
-  *Assistance in Director
Recruitment and Hiring*
-  *Mentoring New Directors*
-  *Menu Development*
-  *Professional Development*
-  *ODE / USDA Administrative Review*
-  *ODE / USDA Procurement Review*

Nursing Services

- The ESC's employ 2 RN's to support our programs.

Deb Calvin

Jessica Anderson

- The ESC's also employ school health coordinators and 1:1 LPN's for districts.



Geauga/Lake Preschool Early Childhood Coordinator ~Denise DiMatteo~



- ☺ There are preschool locations at Ledgemont Elementary School in Thompson, Jordak Elementary School in Middlefield, the Metzenbaum building in Chesterland, the Tarbuck Center in Perry, and McKinley Elementary in Fairport Harbor.
- ☺ The Lake/Geauga County Educational Service Center Early Childhood Department offers preschool center-based or itinerant services to children from local Geauga County school districts. Highly qualified teachers implement a curriculum that is aligned to Ohio's Early Learning Content Standards and prepares children for success in kindergarten and beyond.
- ☺ Children learn best through meaningful play. Our play-based center-based program reflects the integration of physical, cognitive, social and emotional, language, and self-help areas for the total development of the child. Children with identified disabilities develop alongside typical peers.
- ☺ All the ESC Preschool locations have earned a 5 Star rating from Ohio's tiered quality rating and improvement system, Step Up To Quality (SUTQ)!!



Gifted Services

Tricia Ebner, Gifted Coordinator

Serving Kirtland, Fairport Harbor,
West Geauga, Berkshire, Newbury,
Norton (Summit), Bay Village (Cuyahoga)

Range of supports:

- Professional development in gifted child education
- Support to classroom teachers, GIS, and district coordinators
- Instruction and support to gifted learners
- Writing of written education plans (WEPs), written acceleration plans (WAPs)
- Screening and assessment for identification of giftedness
- Compliance with Ohio's operating standards for gifted child education
- Gathering of data and documentation for EMIS reporting



The Lake Academy

NEW LOCATION

Hale Road Elementary School

56 Hale Road ~ Painesville, OH 44077

Building Administrator ~ Dr. David Bowlin



Helping students
reclaim their education
and find success.

Geauga Youth Center School

Donna Cook, Director

- Contracted with Ravenwood Mental Health Center
- Education provided for the youth in this therapeutic residential setting
- Emphasis on credit recovery and life skills
- Seamless delivery of services with students having access to social worker and therapist
- Social worker works with home district to ensure optimal use of academic time to meet individual student needs
- Social worker provides transition services to exiting students



Social Workers

Supervisor, Donna Cook

- Provide social services for students with identified needs on IEP
- Group work
- Medicaid Billing
- Assessments
- Responds to all school crisis

Parent Mentor

Laura Janson



Guiding Families Through the Special Education Process

- A parent mentor provides information and support to families of a child with a disability and school districts.
- The mentor is a parent of a child with a disability.
- Goal of a parent mentor is to support the relationship between the school and the family of a child with a disability.
- Mentors provide information and support to families about special education issues.
- Additionally, they make sure the district receives the perspective and input from families.

Community and School Prevention

Karen Lackey, TPP Supervisor

- Geauga Teen Pregnancy Prevention (TPP) – Integrated Holistic Sexuality Education in grade five through ten based on Search Institute developmental assets.
- Digital World – Social media, Internet and digital awareness program aligned with social media’s impact on relationships, interpersonal skills and wellness/mental health needs.
- Youth Led Prevention and Youth Advisory Council (YAC) – Ohio has evidence based youth leadership program and county-wide youth council utilizing the Strategic Prevention Framework.
- School Community Forum – Collaborative initiative organized to address non-academic school needs made up of 15 youth serving organizations, representatives from each Geauga County School District, and committee of youth leadership students.

S.T.A.R.S. Autism Program

Specialized **T**eaching for students with **A**utism in a **R**esource **S**etting
Supervisor~ Alanna Hruska

Mission Statement: *To teach each child in an environment that fosters acceptance, independence, and success by incorporating a multi-methodological educational approach.*

LOCATIONS:

- ★ Elementary: Cardinal (2), Kenston
- ★ Middle: Cardinal
- ★ High: Cardinal, West Geauga

2019/2020 ENROLLMENT: 34 students

SERVICES:

- ★ Collaborative team: intervention specialist, regular education teachers/peers within building, SLP, OT, BCBA, APE teacher, district, and parent(s)
- ★ Academic, Social, Adaptive Living, Behavior & Vocational Intervention



S.A.I.L Autism Program

Social Acquisition of Interpersonal Language
Supervisor~ Alanna Hruska



Mission Statement: *To provide a comprehensive, multidisciplinary approach that emphasizes growth in interpersonal language and social skills.*

LOCATION:

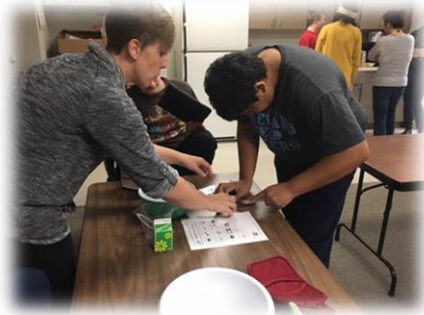
- Manchester Ave. within Perry Local School District

2019/2020 ENROLLMENT: 8 students

- 4 in elementary school
- 5 in high school

SERVICES:

- Collaborative team: intervention specialist, SLP, OT, BCBA, district representatives, and parent(s)
- Academic, Social, Adaptive Living, Behavior & Vocational Intervention



Transportation

Supervisor: Pat McKenrick
Geauga & Lake County ESCs



“Our Services”

- 18-19 SY: we serviced 8 Districts
- 18-19 SY: 12 programs
- 18-19 SY: 149,000 miles: before & after school routes, field trips, & Program use.

“Our Goals”

- Meet the needs of the Districts
- Provide services efficiently and in a cost effective manner
- Presently, 7 vans and willing to expand to meet districts’ needs

“Our Team”

- Gary Egner
- Cindy Gant
- Chuck Haas
- Jim Konte
- Robert McGraw
- John Merritt
- Joe Nowosielski
- Ayo Oduwole
- Ray Pfeister



Vocational Education Services

Jaina Gandolfi ~ Director

- Job Training Program EAST (2008)
 - Serves Cardinal, Berkshire, Chardon LSD
- Job Training Program WEST (2009)
 - Serves Kenston, West Geauga, Newbury, and Chagrin Falls LSD
- GAITWAY HS Job Training Program (2005)
 - Serves 13 districts

Transition To Work Coordinator – Mandi Baggett (2008)
Professional Development-District Consult, Teacher Development, Teacher Trainings, etc...



Job Training Course

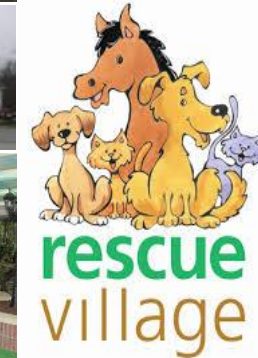
- Student receives IEP services
- Student earns elective credits
- Explore a variety of career fields/employer sites
- Soft skill training towards competitive employment



Employer Partnerships

GEAUGA COUNTY

- UH Geauga Medical Center
- Bed Bath & Beyond
- Old Navy
- NAMI of Geauga
- Fowlers Mills & Legend Lakes Golf Course
- Habitat For Humanity RESTORE
- Heather Hill
- Mustard Seed & Café
- Metzbaum Sheltered Industries
- Geauga County Public Libraries
- The Weils Senior Community Living
- Marci's Hair on the Square
- **Kent State Geauga Campus**
- **Napa Auto Parts**
- **Kinetico**
- **Tarkett-Solon**
- **Great Lakes Cheese**
- **Nestle/Stouffers USA**



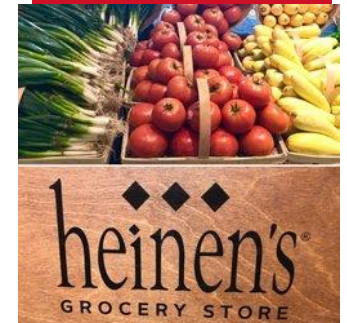
Employer Partnerships continued...

LAKE COUNTY

- Hope Ridge United Methodist Church
- Lake Health System
- EMI
- Endura Plastics -PAID
- **TJ Maxx**
- Layton PT
- Lantern of Madison
- Bed Bath & Beyond
- Heinen's Fine Foods
- St Denis & Powder Horn Golf Course
- Goodwill Industries -PAID
- Round One
- **Canduran Bed & Breakfast**
- **Napa Auto Parts**



PLASTICS EQUIPMENT



Transition To Work Services

- Coordinator: Mandi Baggett
- Work Study Course
- Internships
- Transition Services
- Career Assessment
- Professional Development
- District Consults-Madison, Fairport Harbor, Chardon



Lake County Vocational Services

- Riverside RAVE Job Training Program (2014)
 - Serves Riverside, Painesville City, Madison



Unique Like Me Store (2011)

- The Lake County ESC established Unique Like Me as the first retail site by the solely operated LCESC staff and students.
- All items sold in the store are made by the students as well as students fully participate in the operation of the retail setting including greeting the customers, keeping the store clean, tracking the inventory, and running the cash register.
- **Partnerships with Broadmoor/Deepwood, Madison Schools, Painesville City Schools, Perry Schools, and Mentor Schools.**
- **STORE HOURS**-Monday – Friday, 10:00 am - 4:00 pm, 184 Main Street in Painesville (across from Lake County Job and Family Services and next to the florist)



PROJECT SEARCH

- **Project SEARCH, Lakeland Community College (2011)**
 - Transition-to-Work Program is a unique, business-led, one-year employment preparation program that takes place entirely at the workplace.
 - Total workplace immersion facilitates a seamless combination of classroom instruction, career exploration, and hands-on training through worksite rotations.
 - Partnerships with OOD, DODD, ESC, Host Business
 - Instructor; Sharon Khoeler
 - Geauga & Lake County students- Mentor, Painesville City, and Berkshire



iSTEM

Early College High School
TAMEE TUCKER, CHIEF ACADEMIC OFFICER

Where we do school differently
Individual approach; real world application
STEM pedagogy, Mastery Learning

**Problem Based
Learning**



Collaborative Learning

